

MsFirmwareUpdater - Firmware Update



CHANGES

Date	Description	Created By	Review By
11.8.2022	Clarifications	MM	
1.12.2020	Initial Release	VB	MM

Contents

1	About	3
2	Introduction.....	3
3	Preparations	3
4	Process of Updating.....	4
5	Patents, Copyrights and Trademarks	5
6	Contact	5

1 About

This document is about how to update version of firmware used in products of MACH SYSTEMS s.r.o.

2 Introduction

For updating the device’s firmware, a .msf firmware file, **MsFirmwareUpdater** application, data cable (type depends on purchased product), will be needed.

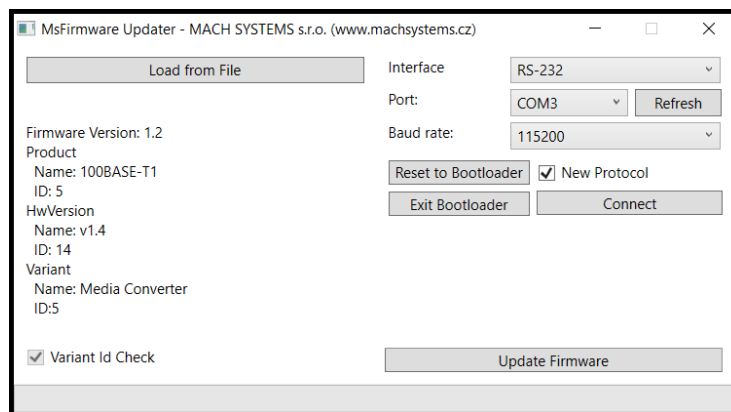
3 Preparations

Connect the device to the computer. Download the **MsFirmwareUpdater** application and the newest version of firmware file for your device - you can find it in the table under the number of version and release date - from www.machsystems.cz/en/support and extract all files to a new folder.

1. Run “MsFirmwareUpdater.exe”
2. Click on “Load from File” button
3. Select the .msf file
4. Select the interface type (RS-232/CAN) and the device COM port / CAN channel.

For devices connected over USB, select RS-232.

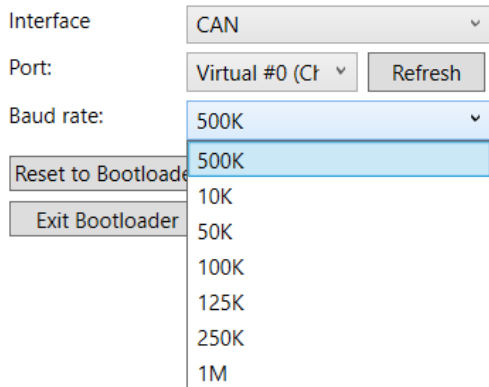
Shown information under “Load from File” button depends on the selected .msf file. “Variant Id check” shall be checked by default. “New Protocol” checkbox shall be checked by default, too. It is recommended to use baud rate of 115200.



In many cases, you can connect multiple MACH SYSTEMS’s devices to the computer. Depending on your device, it can be flashed either over CAN bus, RS-232, or USB (virtual COM port). The MsFirmwareUpdater allows you to select the interface type, port, and baud rate:

Interface	Port	Baud rates
RS-232	COM1, COM2...etc. depending on your system	9600, 19200, 115200
CAN	Kvaser channels	10K, 50K, 100K, 125K, 250K, 500K, 1M

For example:



4 Process of Updating

1. Select the MSF as described in the previous chapter.
2. Make sure “New Protocol” checkbox is checked.
3. Click on “Reset to Bootloader”.

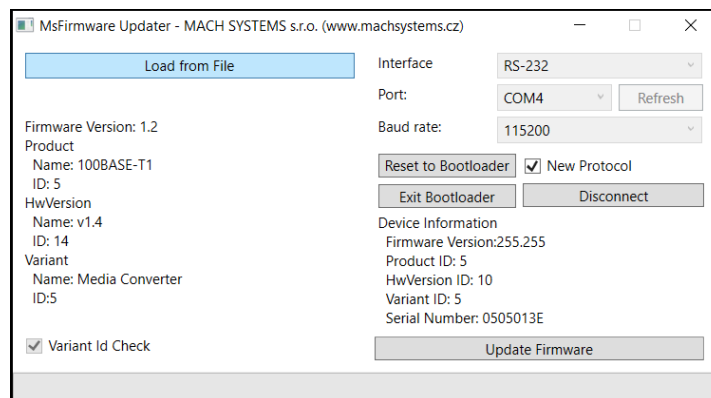
Wait until the device is enumerated (usually 5 - 15 seconds).

4. The device will switch into bootloader mode.

Note: For devices connected over USB, the virtual COM port number will differ for normal and bootloader mode of the device. Thus, if you restart the device into bootloader, you shall refresh the ports (Refresh button) so that you can then use the bootloader COM port. In this case, select this new COM port.

5. Click on “Connect”

The device information such as serial number will be read from the device:



6. **In case you are updating SAE J2716 device, please uncheck “New Protocol” checkbox.**

This applies to the following products: SENT-RS232, SENT-USB, SENT-CAN

7. Click on “Update Firmware” and wait until the flashing is finished.
Progress bar in the bottom shows flashing progress.
8. Once finished, a pop-up window will be shown.

5 Patents, Copyrights and Trademarks

All trademarks are the property of their respective owner. Windows is a registered trademark of Microsoft Corporation in the United States and other countries.

Adobe, the Adobe logo, and Reader are either registered trademarks or trademarks of Adobe Systems Incorporated in the United States and/or other countries.

6 Contact

MACH SYSTEMS s.r.o.

www.machsystems.cz

info@machsystems.cz

Czech Republic



Company registration: 29413893

EU VAT number: CZ29413893